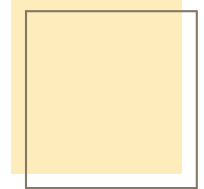
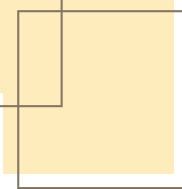
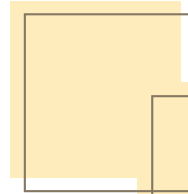
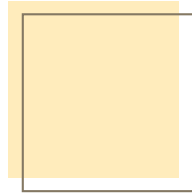




THE VIEWS AT ROSE HILL

89 Rose Creek Road
Leicester, NC 28748
(828) 683-7055
www.theviewsatrosehill.com



BAYFIELD

This traditional style home features one-level living with an open floor plan perfect for entertaining. Common areas feature tall 11-foot ceilings, while the large master suite opens onto a covered rear porch ideal for enjoying the perfect mountain weather.

SPECIFICATIONS

HEATED SQ. FOOTAGE

First Level	1,544
Total Heated Area	1,544

OPTIONAL HEATED SQ. FOOTAGE

Garage Bonus	200
--------------	-----

UNHEATED SQ. FOOTAGE

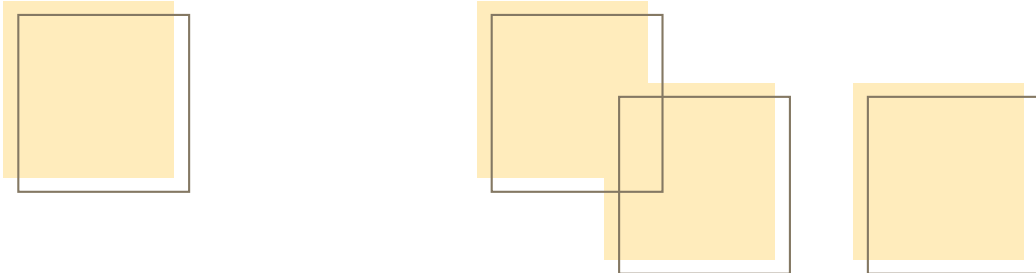
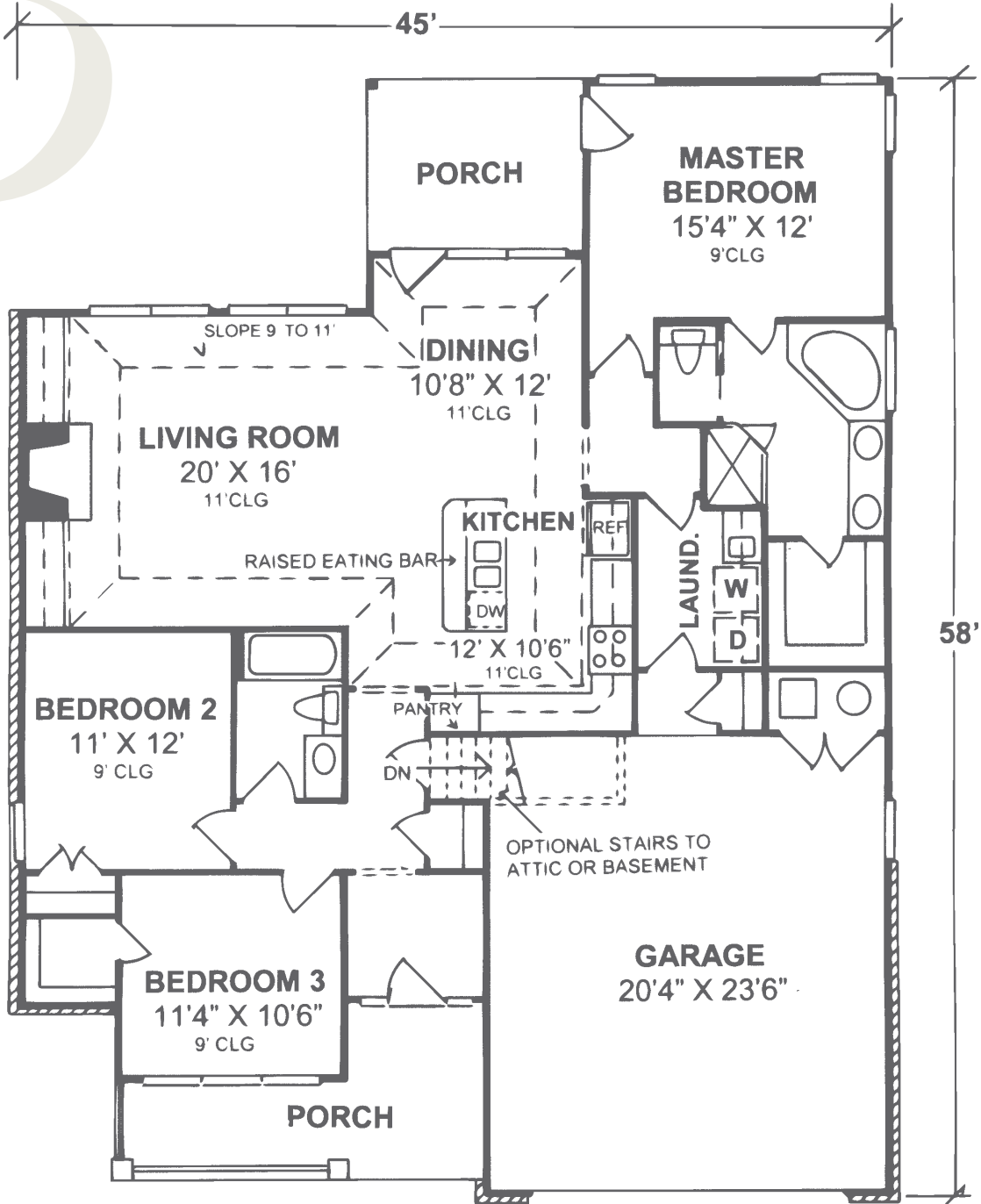
Front Porch	123
Garage	548
Deck/Back Porch	99
Total Unheated Area	770



FLOOR PLAN >>

BAYFIELD

FLOOR PLAN



89 Rose Creek Road
Leicester, NC 28748
(828) 683-7055
www.theviewsatrosehill.com